



Uroneel[®]

ALUMINIUM PANEL SHEET

www.urneelindia.com

ISO 9001:2015 CERTIFIED CO

ALUMINIUM
PANEL SHEET



**RE DEFINE
BEAUTY**

www.urneelindia.com

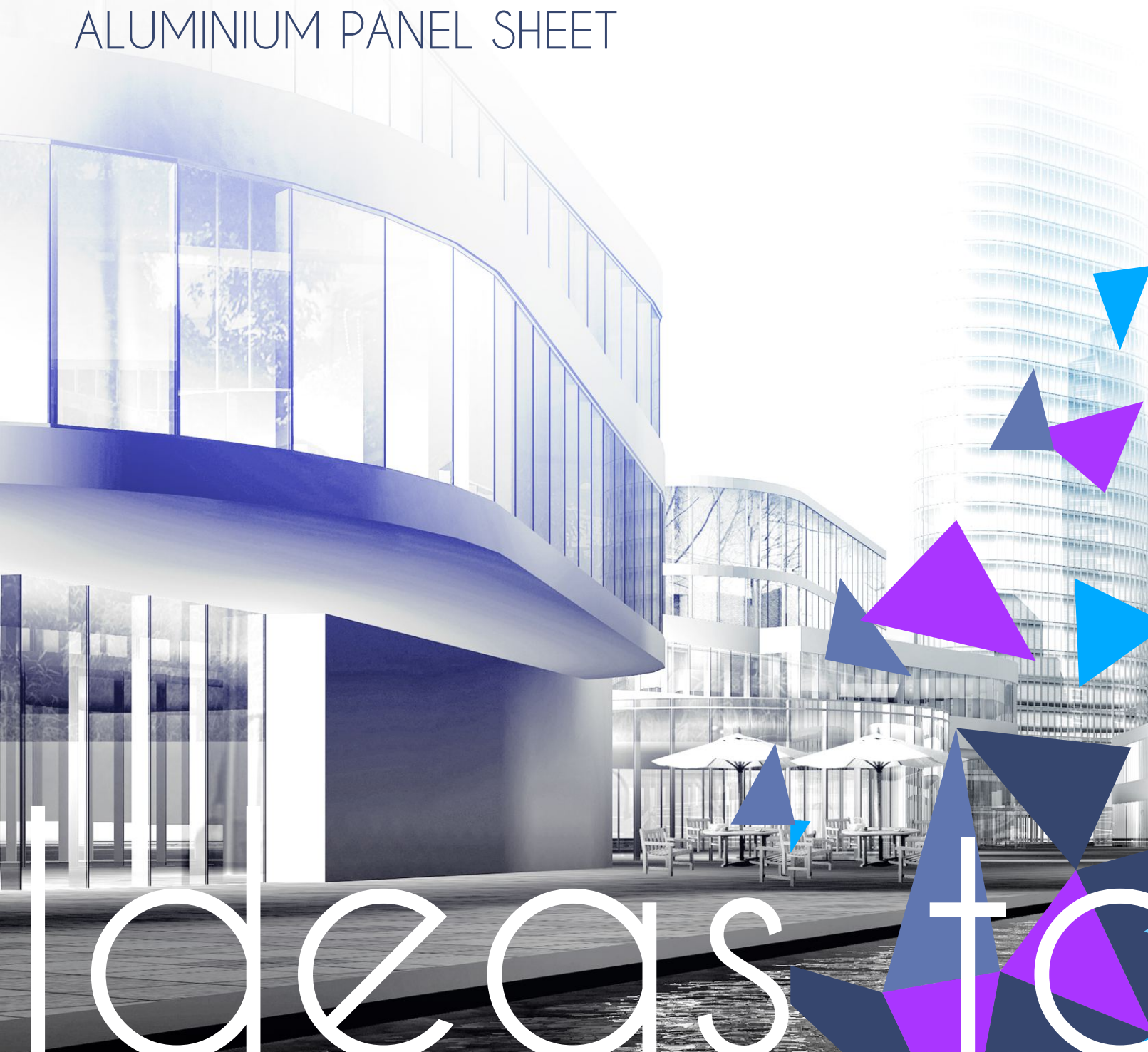
EXPRESSIONS
for the new millennium

ALUMINIUM PANEL SHEET

We are an efficient, innovative and creative business group, known for its technological leadership, professionalism and ethical approach, both nationally and internationally.

Building on this foundation, The Uroneel Group has defined a clear cut vision : Build a conglomerate which will become the leader in its chosen business areas, create an organisation that all its constituents are proud to be associated with, and set benchmarks that will become the standard for others to emulate; all this without compromising on ethical business practices.

ALUMINIUM PANEL SHEET



AVAILABILITY CHART

Grade	Total Thickness	Aluminium Foil Thik	LDPE Core Thik	Aluminium Foil Thik	Coating	Application Area
Platinum	4mm (4F)	0.50	3.00	0.50	PVDF	Exterior
Pearl	4mm (4P)	0.25	3.50	0.25	PVDF	Exterior
Ruby	3mm (3R)	0.25	2.50	0.25	PVDF	Exterior
Decor	3mm (3D)	0.15	2.70	0.15	PE	Interior

Platinum available with 30 micron (+3) mm coating with KYNAR 500 (Min 70%)

★ 3R (3mm 0.25) ★ 4P (4mm 0.25) ★ 4F (4MM 0.50) ★ 3D (3mm 0.15)

Standard Dimensions

Thickness : 1mm, 2mm, 3mm, 4mm and 6mm.

* Special thickness & lengths available on request.

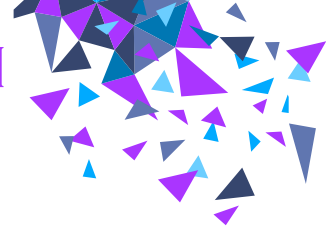
Std Size : 1220mm X 2440mm, 1220mm X 3050mm, 1220mm X 3660mm.

In addition to this we can also provide APSs in larger width of 1550mm.

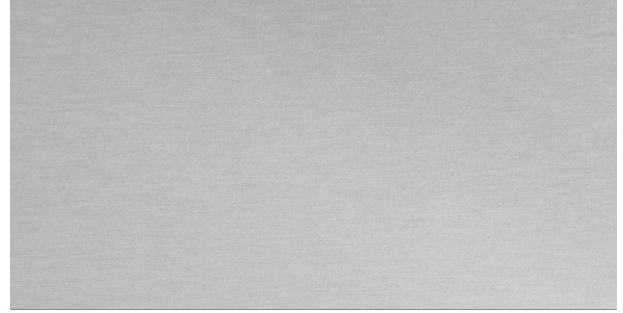
(As Per Requirement)



Reolity



UN 901 - BRIGHT SILVER



UN 902 - SILVER



UN 903 - CHAMPAGNE SILVER



UN 904 - CHAMPAGNE GOLD



UN 905 - JADE GREEN



UN 909 - RICH GOLD

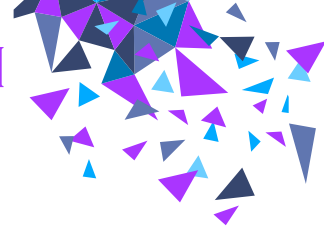


UN 913 - COPPER



UN 920 - METALLIC BRONZE





UN 922 - METALLIC BLUE



UN 923 - ROSE METALLIC



UN 926 - DARK GREY



UN 927 - WINE RED



UN 929 - COPPER BRONZE



UN 304 - PEARL BROWN

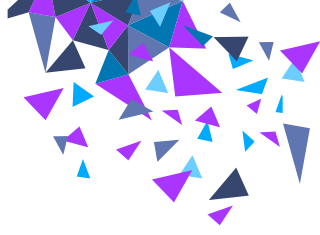


UN 306 - PEARL GREY SILVER



UN 307 - PEARL CHAMPAGNE SILVER





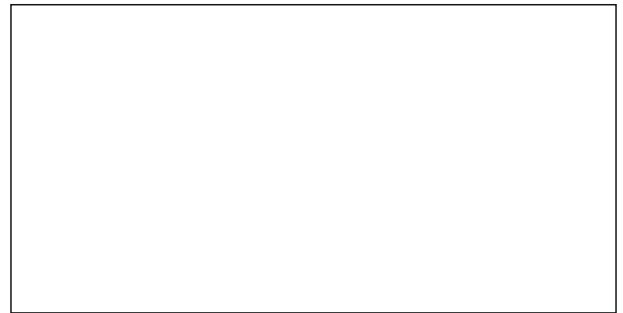
UN 906 - CLASSIC BLUE



UN 907 - RED



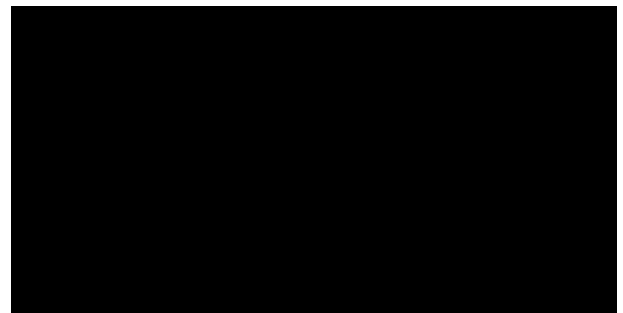
UN 908 - YELLOW



UN 911 - MILKY WHITE



UN 912 - OFF WHITE



UN 914 - BLACK

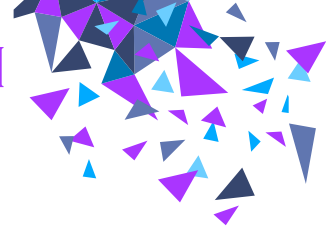


UN 916 - SEA BLUE



UN 917 - DARK BLUE





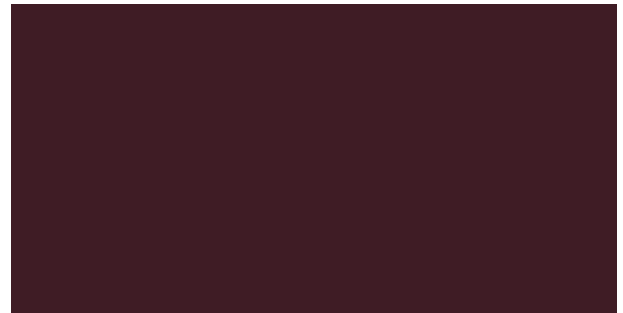
UN 918 - ORANGE



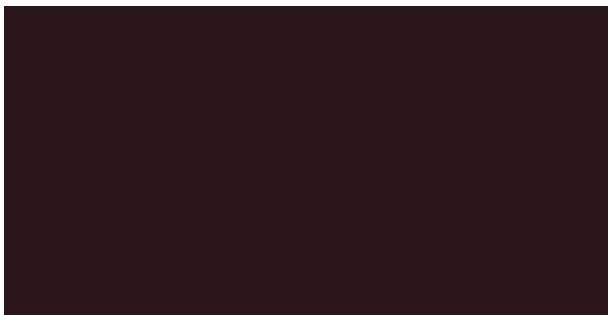
UN 930 - GREY



UN 931 - TRAFFIC YELLOW



UN 932 - BURGUNDY



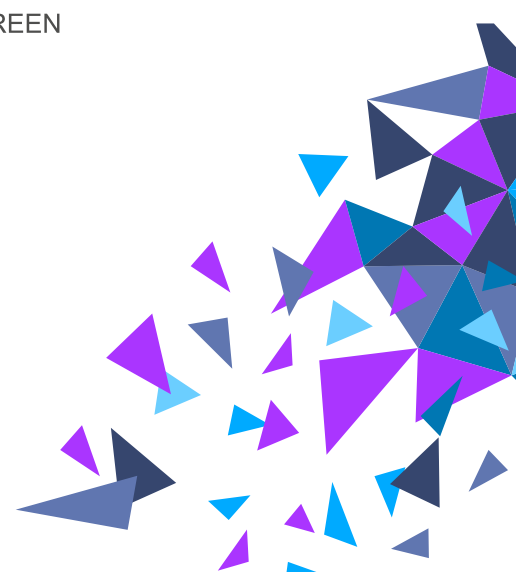
UN 303 - CHOCOLATE BROWN

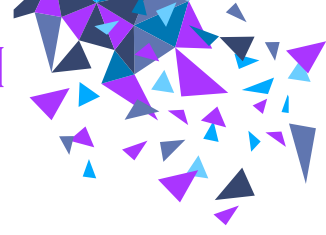


UN 305 - FRESH GREEN



UN 919 - EMERALD GREEN





HIGHGLOSS

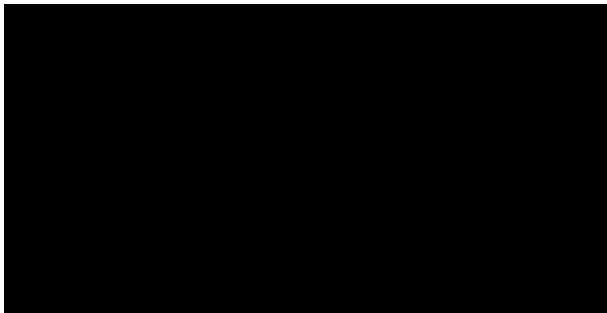
Series



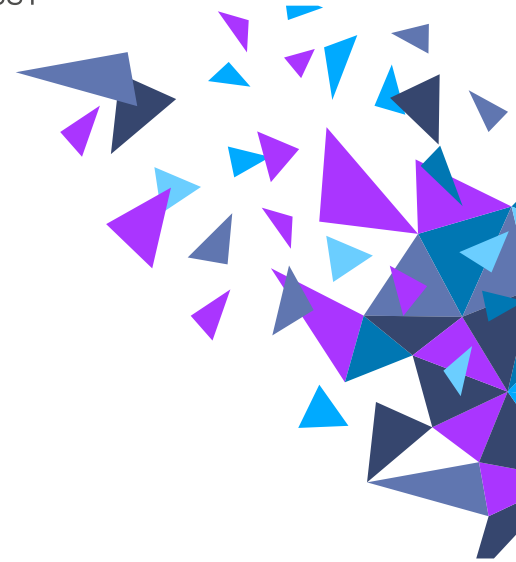
UN 411 - WHITE GLOSSY



UN 407 - RED GLOSSY



UN 414 - BLACK GLOSSY



UN 501 - BUTLER FINISH



BRUSH

Series

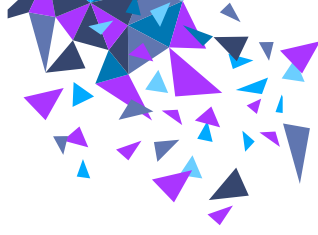


UN 502 - GOLDEN BRUSHED



UN 503 - SS BRUSHED ALUMINUM

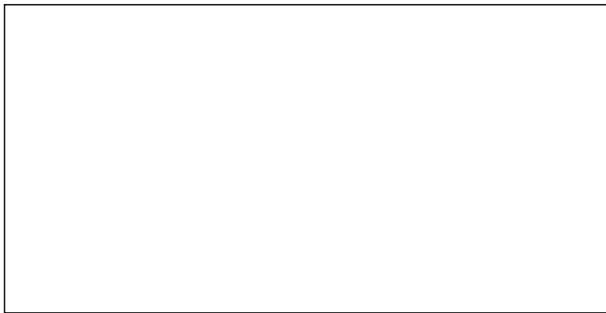




UN 201 - NANO SILVER



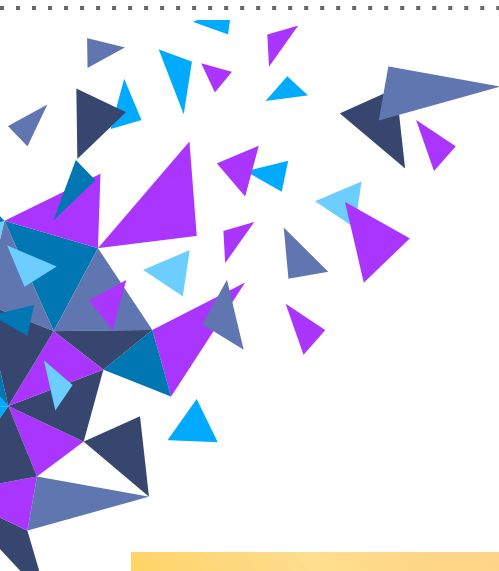
UN 204 - NANO CHAMPAGNE GOLD



UN 211 - NANO WHITE



UN 226 - NANO GREY

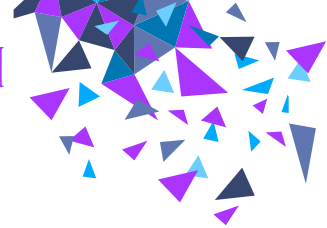


UN 603 - PEARL GOLD



UN 604 - PEARL SILVER





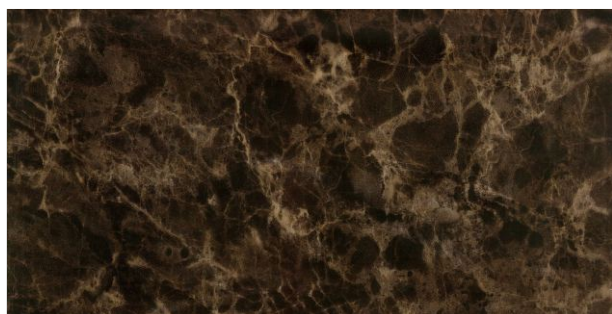
UN 702 - TRAVERTINE CREMA

★ ★



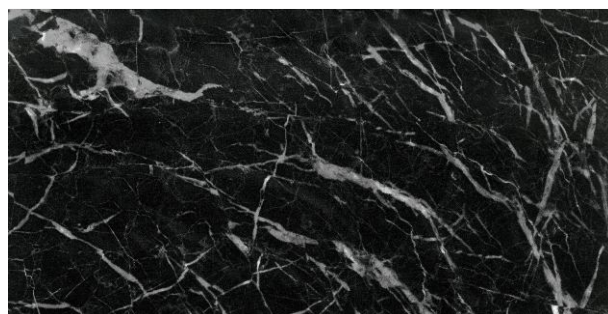
UN 704 - RUST STONE

★ ★



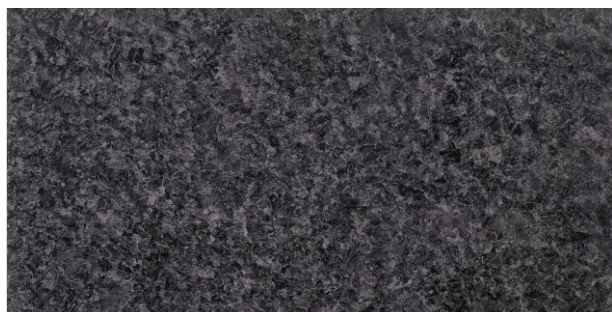
UN 705 - EMPERADOR DARK

★ ★



UN 706 - ONYX BLACK

★ ★



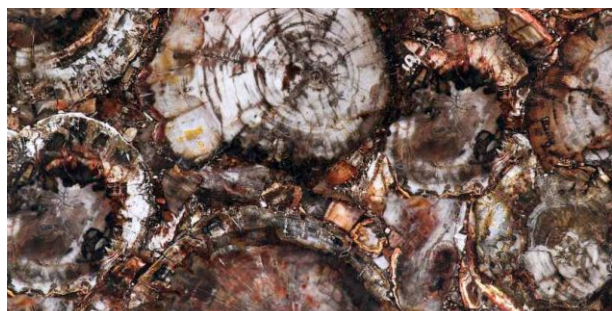
UN 708 - BLACK GRANITE

★ ★



UN 709 - ITALIAN BROWN

★ ★



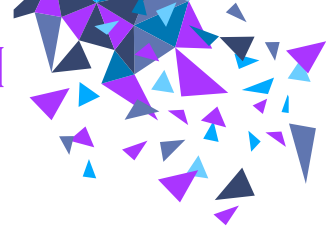
UN 710 - STONE FIRE

★ ★



UN 711 - STATUARIO

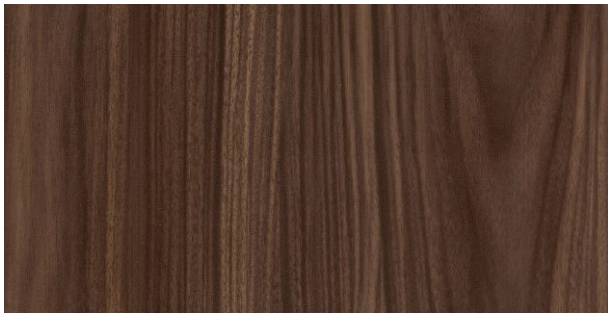
★ ★



UN 801 - MEXICAN TEAK



UN 802 - CANADIAN CHERRY



UN 803 - GREENLAND WALNUT



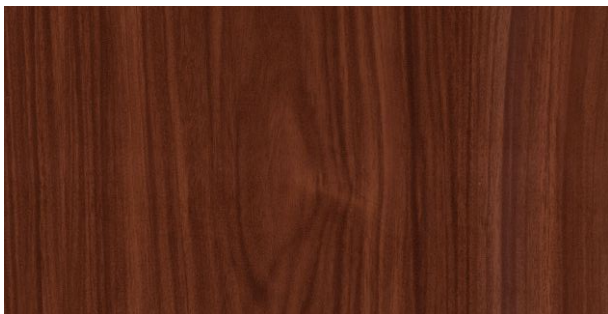
UN 804 - BRAZILIAN WALNUT



UN 805 - AFRICAN SAPELE



UN 806 - CONGO SAPELE

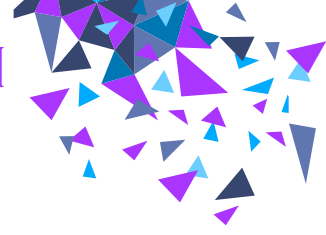


UN 807 - FINLAND CHERRY



UN 808 - EBONY





UN 809 - GEMINI OAK



UN 810 - PRINCE WOOD



UN 815 - ROSE WOOD



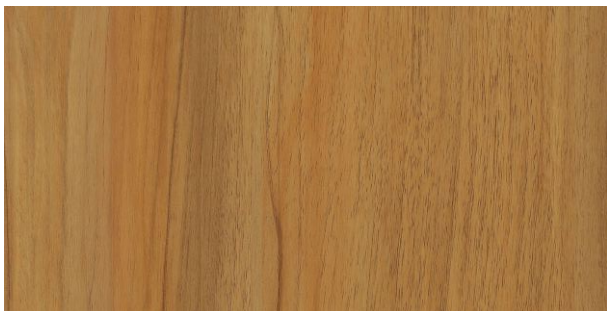
UN 816 - BURMA TEAK



UN 817 - CALIFORNIA WALNUT



UN 818 - SMOKED WALNUT



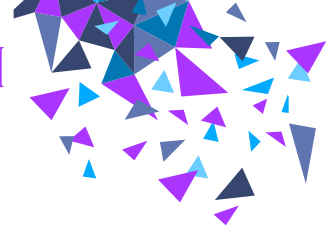
UN 819 - BURN WALNUT



UN 820 - ANTIQUE WOOD



**ALUMINIUM
PANEL SHEET**
EXTERIOR & INTERIOR



WOODEN
Series



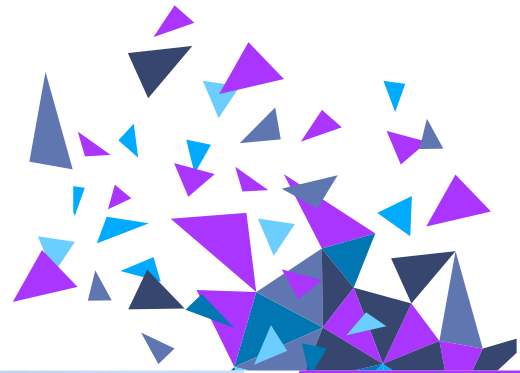
UN 831 - TIMBER LIGHT



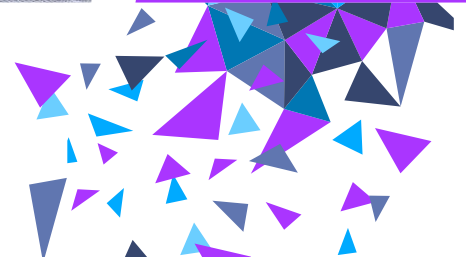
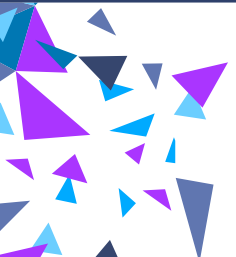
UN 832 - ROYAL WALNUT

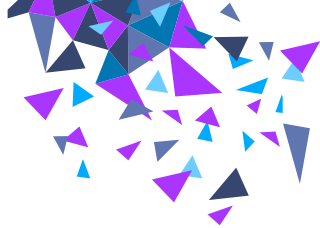


UN 833 - RED CHERRY



WOODEN
Series





UN RW 821 - PALISANDRO BROWN



UN RW 822 - COUNTRY OAK



UN RW 823 - KNOTTY WOOD



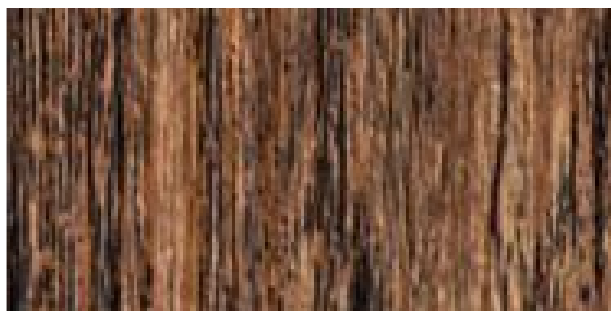
UN RW 824 - RICH ASH



UN RW 825 - AFRICAN IPE

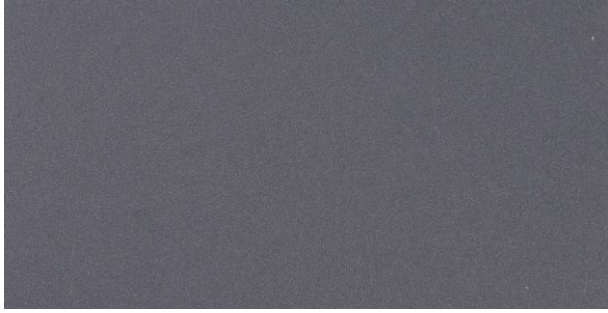
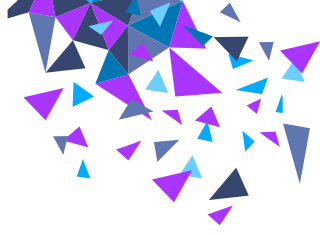


UN RW 826 - RIVA OAK

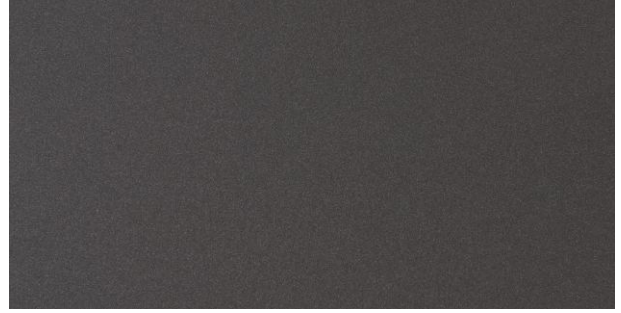


UN RW 827 - RUSSIAN TEAK





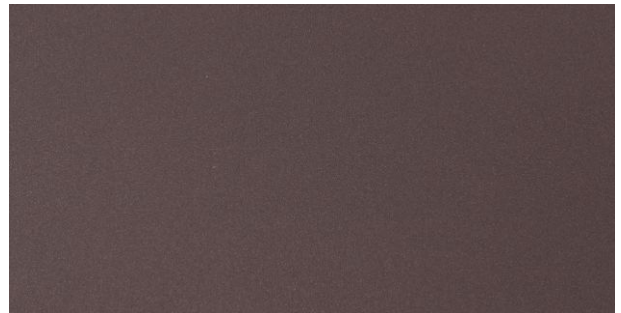
UN SD 1001 - NIGHT GREY



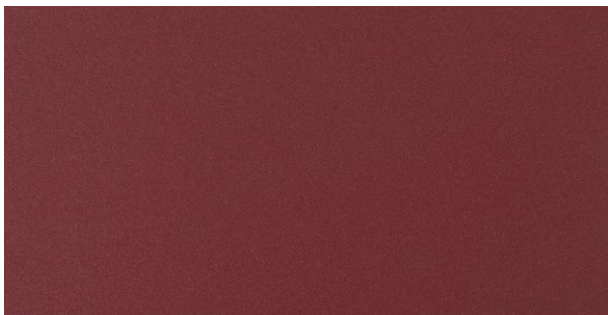
UN SD 1002 - GREY MOON



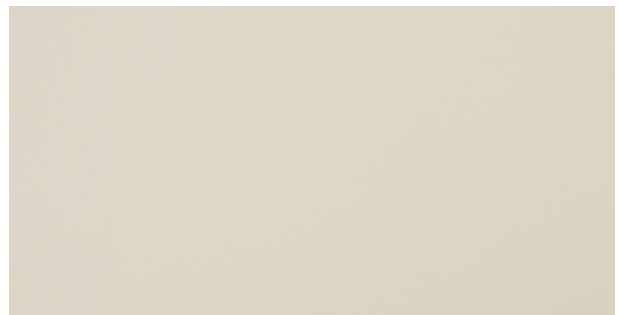
UN SD 1003 - SHADOW GREY



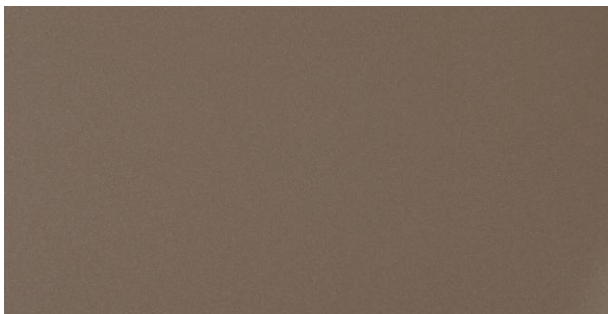
UN SD 1004 - BROWN BEAR



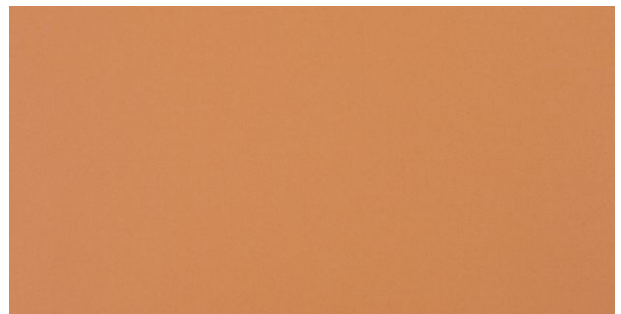
UN SD 1005 - WINE SAND



UN SD 1006 - IVORY SAND

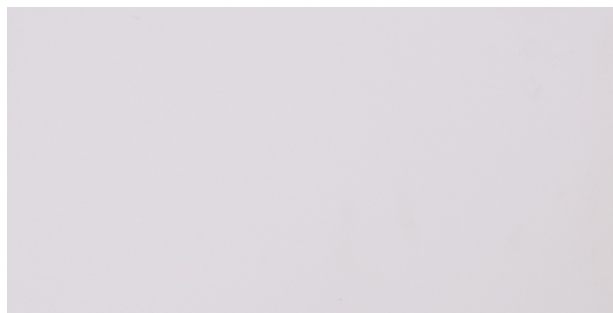
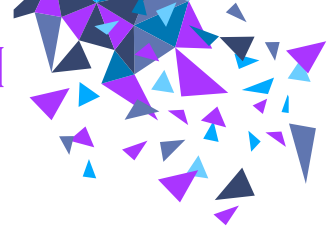


UN SD 1007 - MULTANI MAGIC

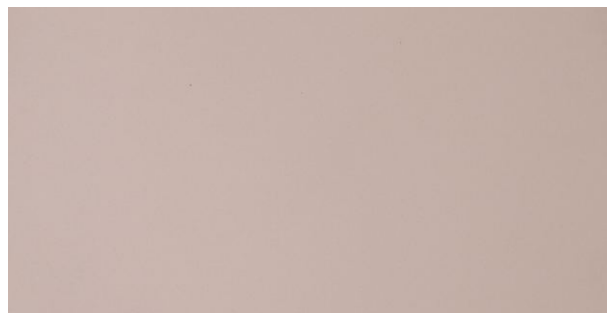


UN SD 1008 - LAVA SAND

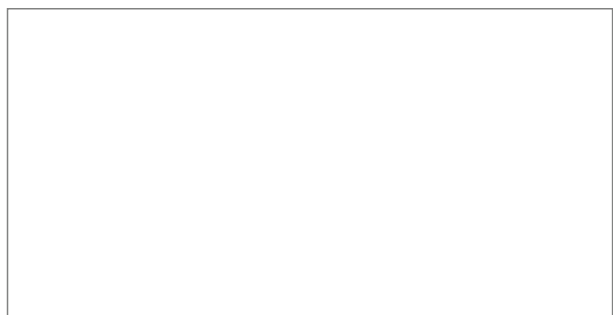




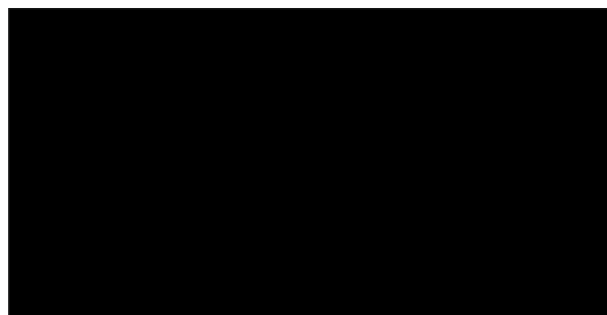
UN SD 1009 - WHITE SAND



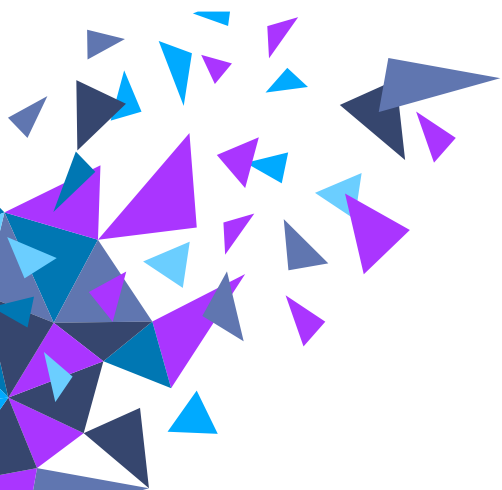
UN SD 1010 - BEIGE SAND

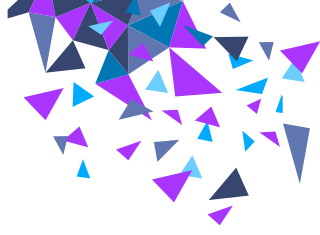


UN 811 - GALAXY WHITE



UN 812 - GALAXY BLACK





URONEEL FR

FIRE RETARDANT *Series*

Uroneel FR is composed of fire resistant minerals (ATH & / or MDH) filled core, sandwiched between two architectural aluminium skins of engineered alloys such as 3XXX/5005 with Kynar 500 (PVDF) lacquered surface finish. Due to the self-extinguishing property of FR core, it retards (slows down) the burning behavior, reduces the intensity of fire, thus does not spread or propagate fire.

URONEEL FR ACPs have very low non-toxic smoke emission which meets building fire rationale for enhancing fire safety. URONEEL FR panels can be processed and fabricated as any other URONEEL ACPs and are very tough and weatherproof and above all, do not actively contribute to combustion in fire.

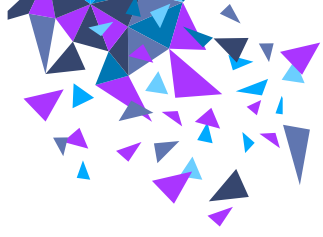


ECONOMICAL

FORMABLE

EN 1350-1 B S1 D0





FIRE BEHAVIOR IN A BUILDING

Fire spreads upwards due to **COMBUSTIBLE CLADDING**

Fire breaks in & out through glass

Flames break out smoke builds up

While glass breakage/fallout allows fire to enter/exit, cladding allows/ prevents spread

Fire spread is restricted due to a **FIRE RETARDANT CLADDING** material and system

No droplets falling down, hence avoiding hazard to people

No smoke & toxic fumes

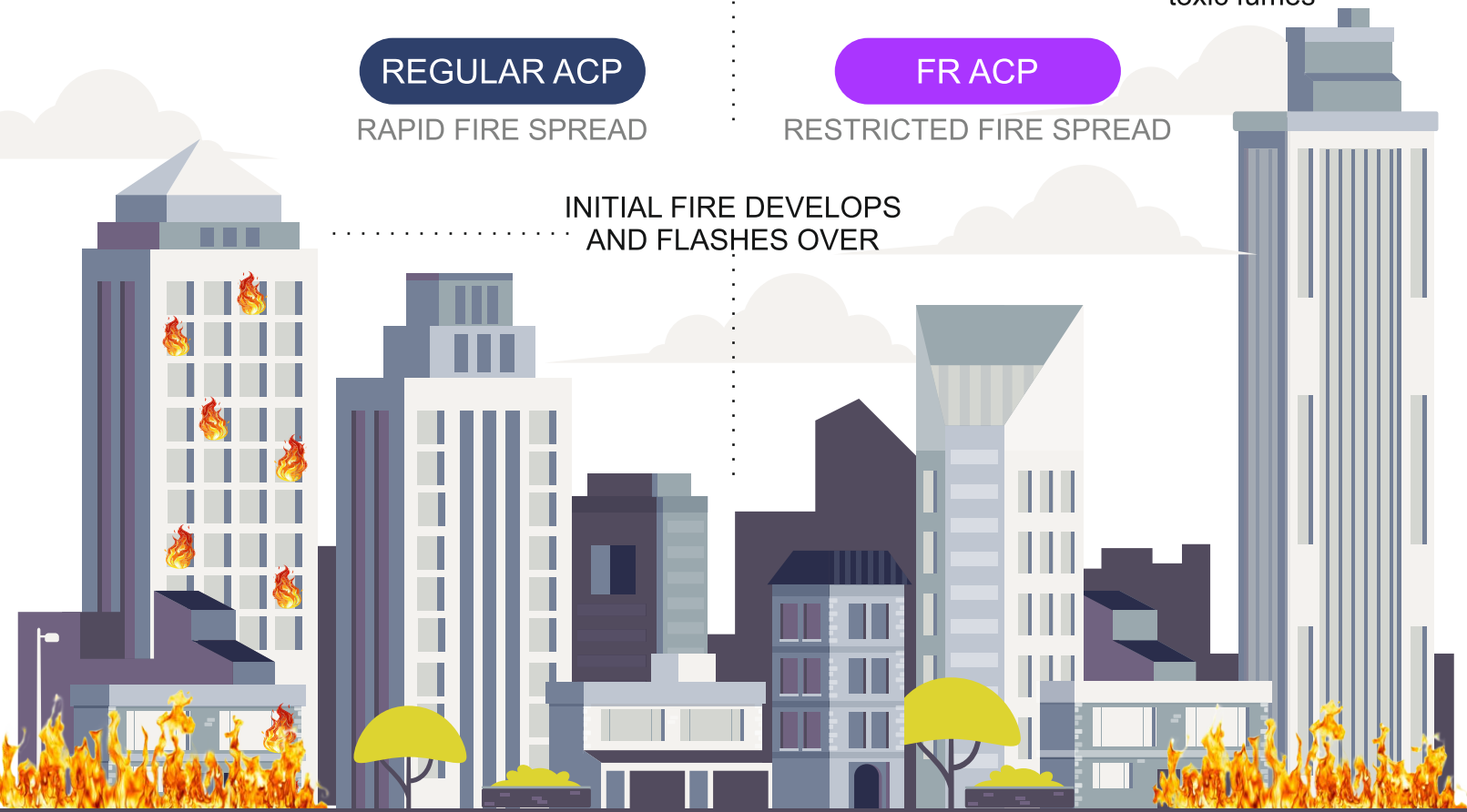
REGULAR ACP

RAPID FIRE SPREAD

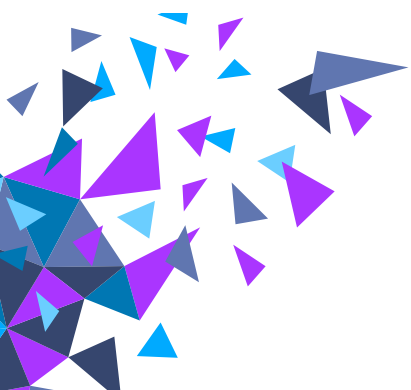
FR ACP

RESTRICTED FIRE SPREAD

INITIAL FIRE DEVELOPS AND FLASHES OVER



INTERNAL AND EXTERNAL FIRE INCIDENT



ALUMINIUM
PANEL SHEET
EXTERIOR & INTERIOR

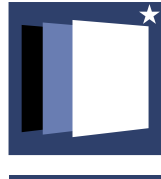


URONEEL SAMPLE

Batchwise colours may differ. Please ask for sample. Color, designs & texture subject to change without notice

ALUMINIUM PANEL SHEET

EXTERIOR & INTERIOR



Exclusive Range



Fire Retardant



Environment Friendly
Green DNA

ADDRESS

Bhagirathi Apartments. Office No.1, 321, Shukrawar Peth,
Chinchechi Talim Road, Pune - 411002, India.

Email - info@uroneelindia.com.

Phone - +91 20 24492090 / 24482373 . Fax - 020 24482373.

